

# ProjectManager – Quick start

## Contents:

<b>1. General information .....</b>	<b>2</b>
<b>2. Quick start .....</b>	<b>2</b>
<b>2.1. Initial connection to the Lemur-server.....</b>	<b>2</b>
<b>2.2. Main Functions .....</b>	<b>4</b>
<b>2.3. Creating a new project (processing session) .....</b>	<b>5</b>
<b>2.4. Control of frame processing .....</b>	<b>7</b>

## 1. General information

**lemurprojectmanager** – is a client cross-platform program of the **CoLiTec** software that is responsible for transferring data (astronomical frames) from the “telescope” to the astronomical image processing server.

The main features of **lemurprojectmanager** are the following:

- defining folders with frames to be processed on the server;
- online monitoring of the specified folders for the appearance of new frames;
- setting a configuration file with processing parameters for each separate stream of frames;
- creation and monitoring of several processing control sessions.

## 2. Quick start

After successful installation of the client part of **Lemur** software run the program «**lemurprojectmanager.exe**» (Windows) or «**lemurprojectmanager**» (Linux).

### 2.1. Initial connection to the Lemur-server

After the first launching of **lemurprojectmanager** - the window for entering the server address and account parameters will appear (figure 1).

Contact your server administrator for the server address and account settings.

After successful connection, the connection status message will appear (figure 2).

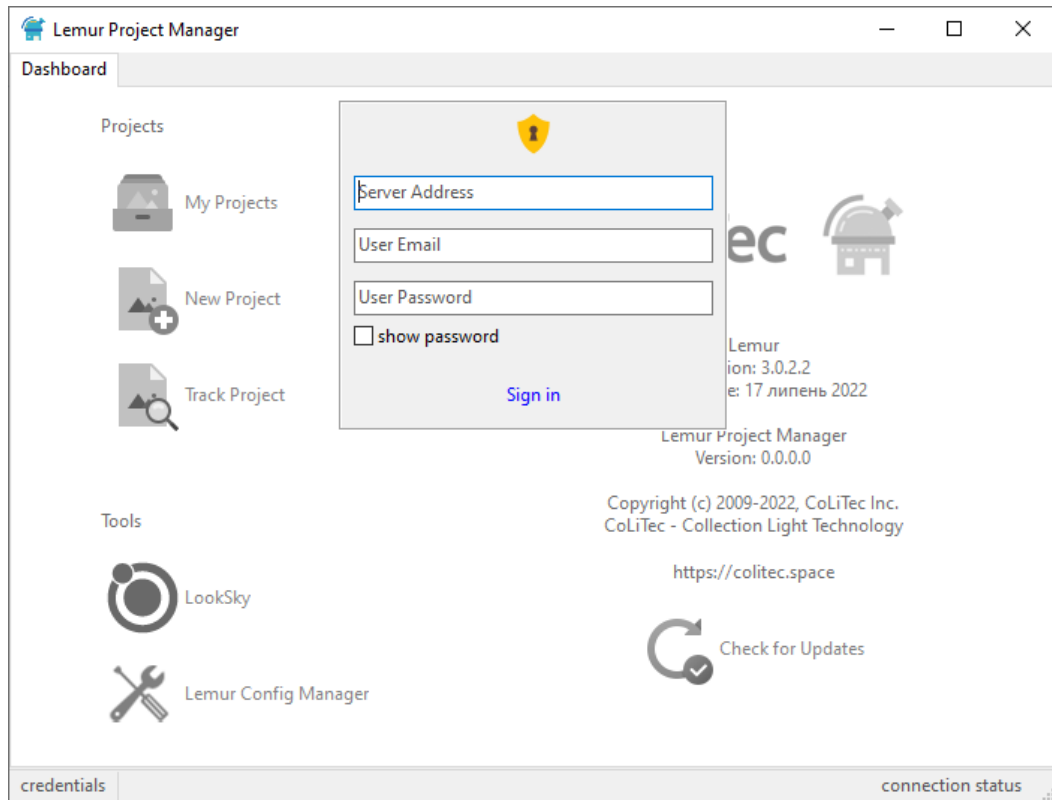


Figure 1. lemurprojectmanager during the first launching

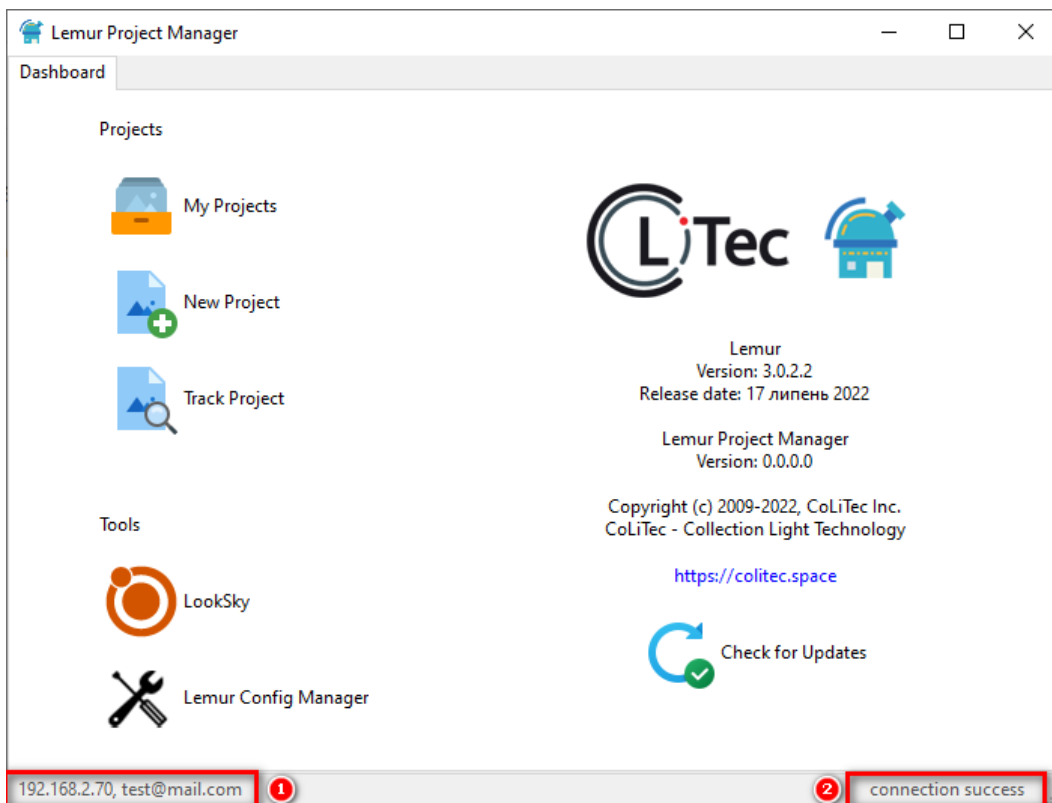
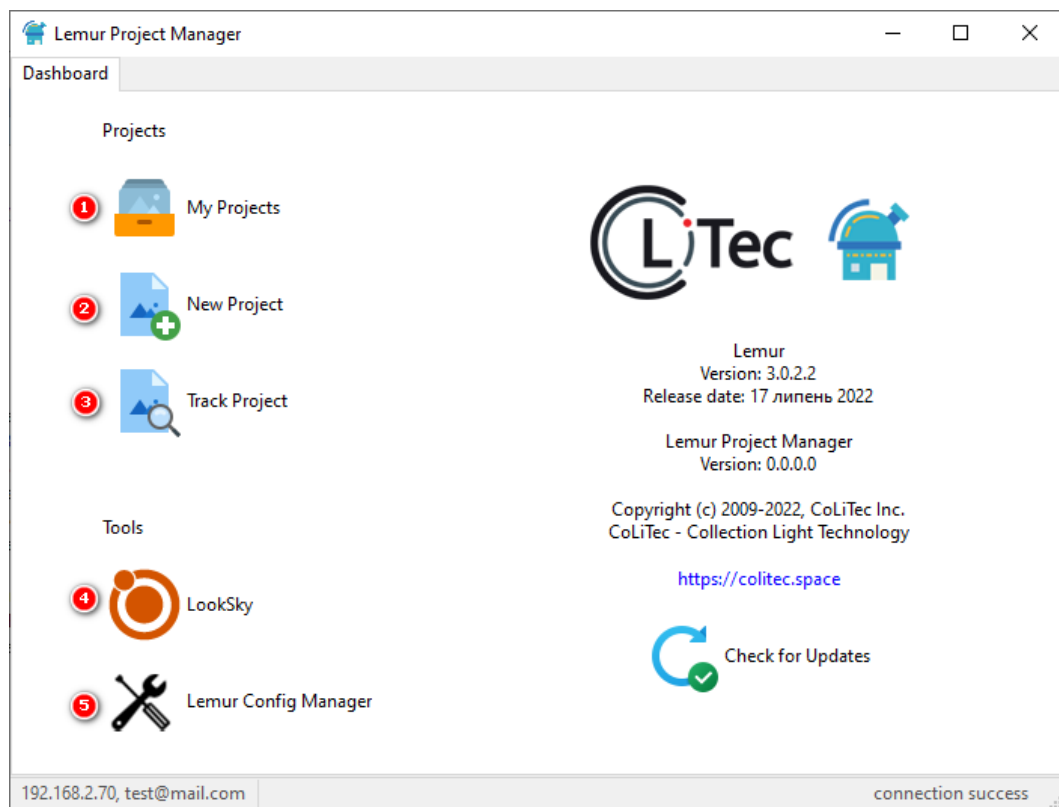


Figure 2. lemurprojectmanager connection status

## 2.2. Main Functions

As shown in Figure 3, the main functions of the program are:

1. retrieving the list of projects (processing sessions) that have been previously created by the user;
2. creating a new project (processing session);
3. connect to a project (processing session);
4. quick start of the LookSky program;
5. quick launch of the lemurconfigmanager program.



**Figure 3.** *Main Functions*

Let's consider each function in detail below.

### **2.3. Creating a new project (processing session)**

A project or processing session is a certain unit of a set of data (frames) that the user (observer) defines for processing. For example, such a separate project can be a list of frames for one night, or some other target group of frames.

When creating a new project, the user defines:

1. folder where new frames should be searched for
2. configuration file with parameters, how frames in the specified folder should be processed
3. folder where the processed frames will be uploaded

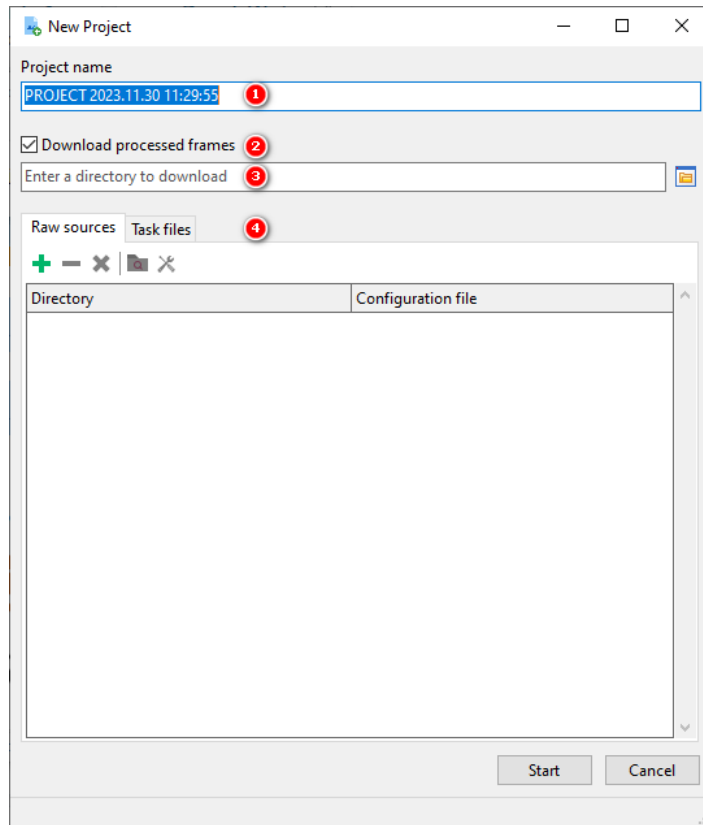
You can specify unlimited number of folders in which you want to search for frames.

For example, the telescope performs several observation plans and saves satellite frames to one folder, and saves asteroid frames to another folder. This situation can be easily explained to the processing control program - one folder (with its own configuration file) can be set for satellite frames processing and a second folder (also with its own configuration file) for asteroid frames processing (figure 5).

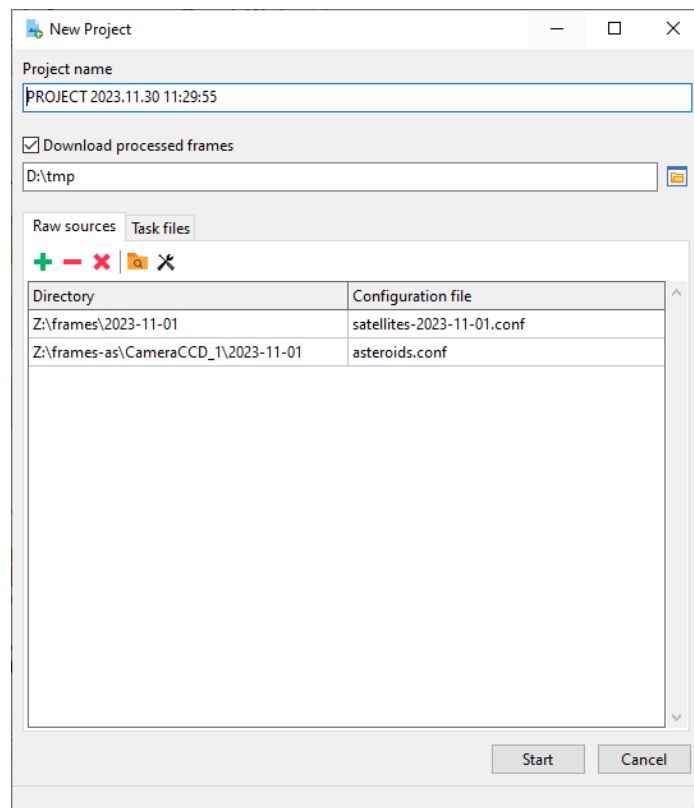
It is also possible to create several projects simultaneously, and thus to divide frames by types of tasks.

Figure 4 shows these controls:

1. Project name;
2. Autoload mode of processed frames. If the mode is not set, the processed frames can be loaded later in manual mode;
3. Folders where processed frames will be loaded;
4. Setting of folders for searching new frames and configuration files with processing parameters.



*Figure 4. Parameters for creating a new processing project (session)*



*Figure 5. Specify multiple folders for searching and processing frames*

After setting all the parameters, press **Start**.

## 2.4. Control of frame processing

Figure 6 shows the frame processing information in the created project where:

1. project tab with project ID;
2. designation, project ID, folder for downloading processing results;
3. information about progress and statuses of processing for the project;
4. information on progress and statuses of processing for each separate group of frames (series).

The screenshot displays the Lemur Project Manager interface. At the top, there is a 'Dashboard' tab and a 'Project 3' tab. The main content area shows project details for 'ID 3, "PROJECT 2023.11.30 11:29:55"' with a download directory of 'D:\tmp' and 20 raw sources. Below this, a table shows the status of various processing tasks. At the bottom, a table lists the processing and downloading status for eight different series.

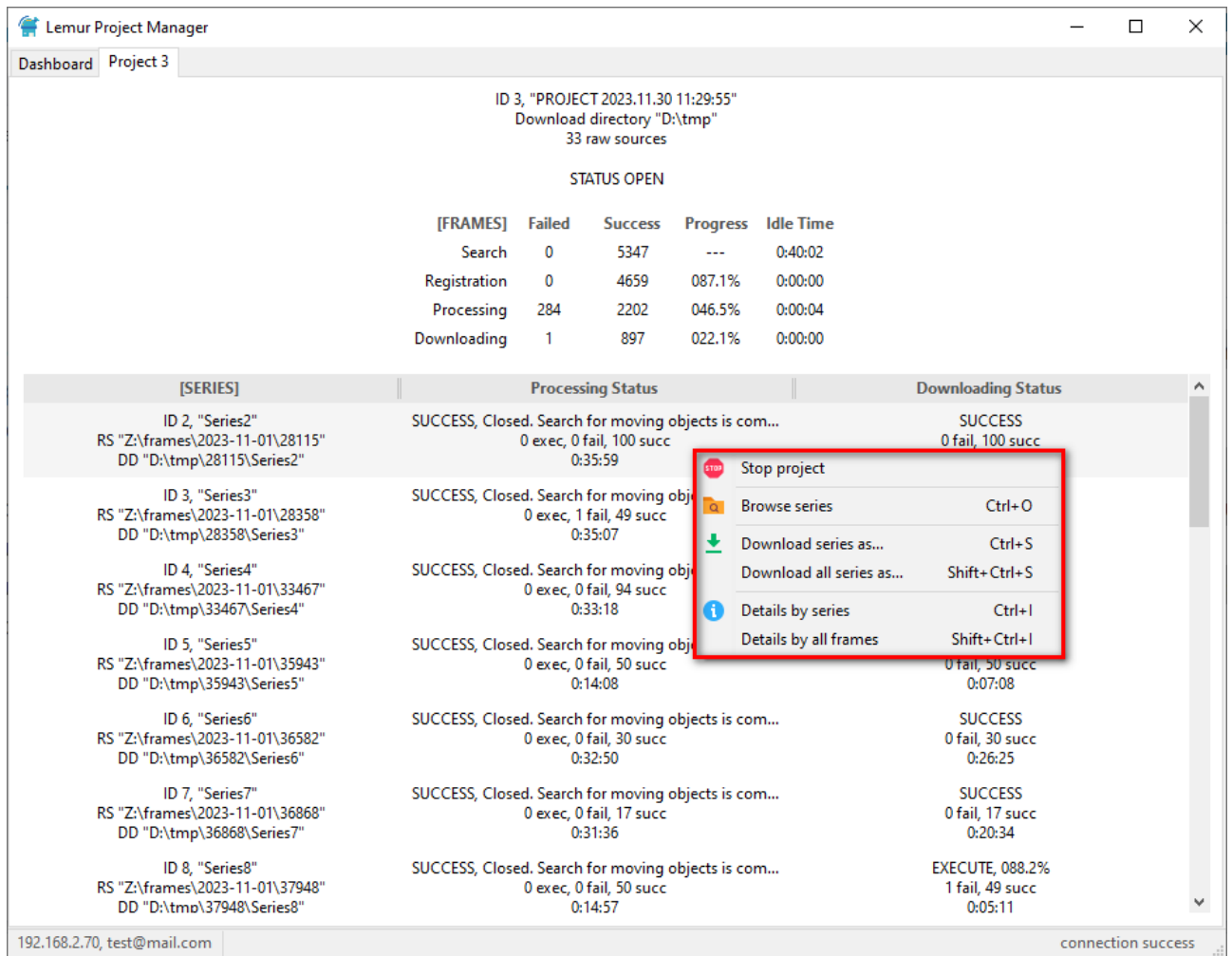
[FRAMES]	Failed	Success	Progress	Idle Time
Search	0	5347	---	0:10:20
Registration	0	1656	031.0%	0:00:00
Processing	38	761	014.9%	0:00:00
Downloading	1	189	004.3%	0:00:00

[SERIES]	Processing Status	Downloading Status
ID 2, "Series2" RS "Z:\frames\2023-11-01\28115" DD "D:\tmp\28115\Series2"	SUCCESS, Closed. Search for moving objects is com... 0 exec, 0 fail, 100 succ 0:06:19	SUCCESS 0 fail, 100 succ 0:02:51
ID 3, "Series3" RS "Z:\frames\2023-11-01\28358" DD "D:\tmp\28358\Series3"	SUCCESS, Closed. Search for moving objects is com... 0 exec, 1 fail, 49 succ 0:05:26	EXECUTE, 088.2% 1 fail, 48 succ 0:01:21
ID 4, "Series4" RS "Z:\frames\2023-11-01\33467" DD "D:\tmp\33467\Series4"	SUCCESS, Closed. Search for moving objects is com... 0 exec, 0 fail, 94 succ 0:03:38	EXECUTE, 040.2% 0 fail, 42 succ 0:00:00
ID 5, "Series5" RS "Z:\frames\2023-11-01\35943"	QUEUE, 17 new processed frames were found in serie... 0 exec, 0 fail, 50 succ 0:00:09	
ID 6, "Series6" RS "Z:\frames\2023-11-01\36582"	SUCCESS, Closed. Search for moving objects is com... 0 exec, 0 fail, 30 succ 0:03:10	
ID 7, "Series7" RS "Z:\frames\2023-11-01\36868"	SUCCESS, Closed. Search for moving objects is com... 0 exec, 0 fail, 17 succ 0:01:56	
ID 8, "Series8" RS "Z:\frames\2023-11-01\37948"	EXECUTE, 20 new processed frames were found in se... 0 exec, 0 fail, 50 succ 0:00:09	

192.168.2.70, test@mail.com | connection success

**Figure 6.** Specify multiple folders for searching and processing frames



*Figure 7. Calling the context menu with the right mouse button*